

Juris Doctor Programme

A practical edge for a future in law



SINGAPORE MANAGEMENT
UNIVERSITY

MASTERS



Nur Liyana Kamaludin
Class of 2021

Master
Your
Future

YONG PUNG HOW
SCHOOL OF LAW

WHY SMU JURIS DOCTOR (J.D.)?



1 Exclusivity

J.D. students are in a class of their own for law core modules.

2 Diversity

Students come from varied disciplines and most of them with prior work experience.

3 Internship

6 weeks of compulsory legal internship is required as part of graduation.

MESSAGE FROM THE PROGRAMME DIRECTOR



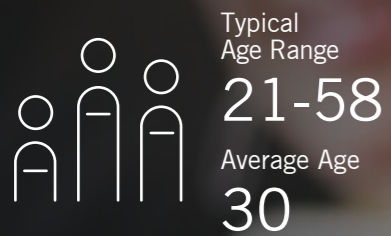
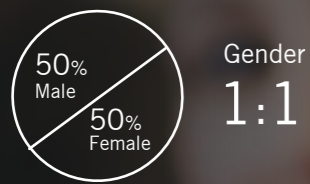
Yong Pung How School of Law's Juris Doctor (J.D.) is a highly competitive and rigorous postgraduate programme that prepares candidates with a prior university degree for the practice of the law in Singapore. The J.D., at its core, is deliberately taught in small, dedicated groups. You can expect your classmates to be drawn from diverse nationalities, cultures, and experiences. J.D. instructors are highly dedicated authorities in their own right, and bring with them a wealth of practical knowledge into the classroom. At SMU's J.D. programme, we aim to cultivate leaders of the legal industry and beyond by invigorating the great potential of our students built on their experience and calibre. Besides a solid knowledge of law, our graduates will distinguish themselves in critical thinking, presentation, and making sound judgments.

Associate Professor Zhang Wei

Associate Dean (Postgraduate Teaching & Curriculum)
J.D. Programme Director
Yong Pung How School of Law

CLASS PROFILE

Discover the profile of great minds you could be networking with.



*Student profiles taken from Classes of 2018-2020.

INDUSTRIES J.D. GRADUATES COME FROM

INDUSTRY DIVERSITY*



Professional (e.g. Accounting) 8%



Education 13%



Government & Non-profit 17%



Finance & Insurance 14%



Information & Communication 5%



Others 13%

ACADEMIC DISCIPLINES*



Business / Economics 15%



IT, Science & Engineering 16%



Accounting / Finance 7%



Arts & Social Sciences 38%

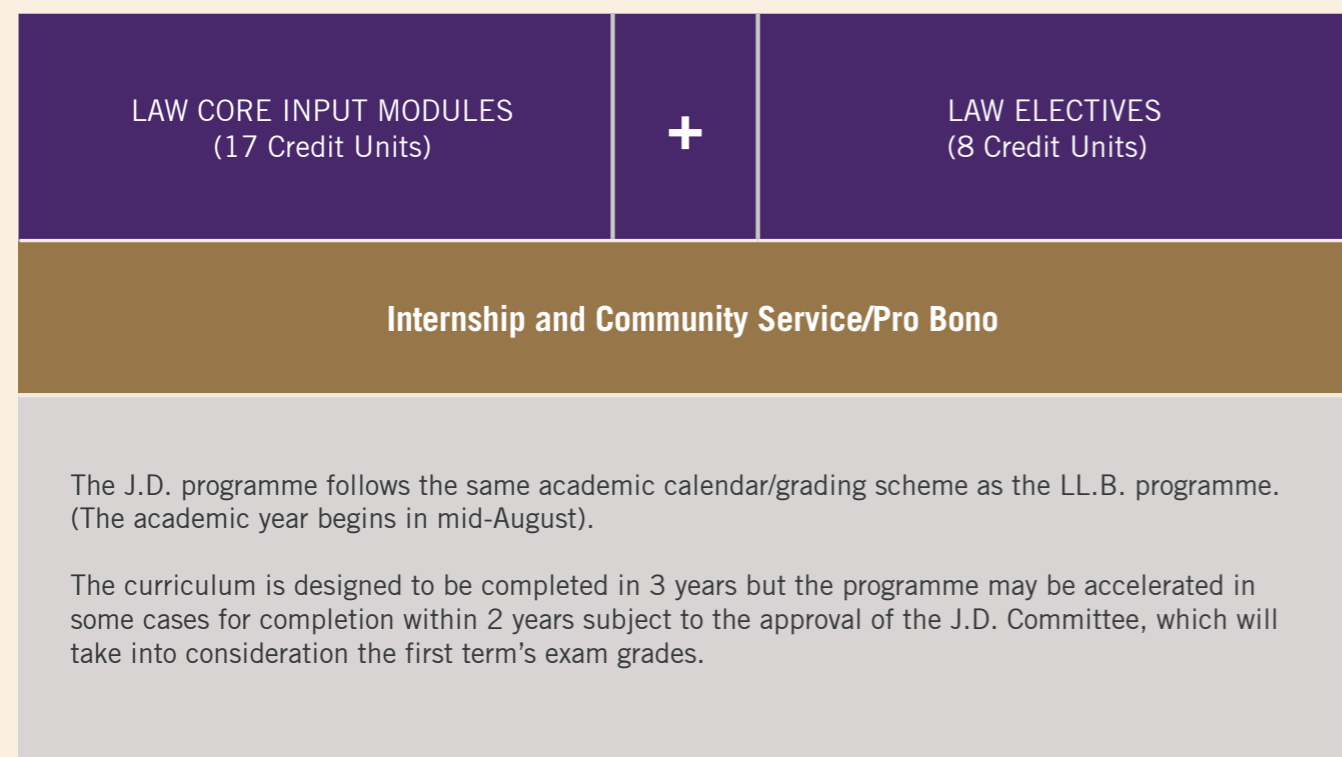


Others (combined) 24%

*Student profiles taken from Classes of 2018-2020.

PROGRAMME STRUCTURE

SMU's J.D. curriculum is endorsed by Singapore's Board of Legal Education and the Ministry of Law. It comprises 23 courses totalling 25 course units.



WHAT MAKES THE SMU J.D. DEGREE SPECIAL?



“The SMU Juris Doctor programme was an intensive and rigorous education that surpassed all my expectations. I particularly appreciated the focus on classroom interaction, the perspectives of classmates with different backgrounds, and the quality of the experienced faculty, including leading practitioners. It provided an excellent education on the practice of law and was perfect preparation for life first as a Justices' Law Clerk and now as a lawyer in private practice.”

Chew Xiang
J.D. Programme, Class of 2012
Partner, RAJAH & TANN Singapore LLP



“The SMU J.D. has been holistic and life-changing. The professors are at the top of their fields and not just inspiring for that; but are also wonderful persons who make the time and effort to teach well and engage with students. The school has additionally been an excellent place to hone practical skills, with its structured and well-resourced moot programme. Certainly, I never thought an introvert such as myself would end up participating in that programme! During my time in SMU, I was also involved in the school's law blog (Lexicon) and worked on a few research projects with faculty members. The school's Directed Research module furthermore provided an opportunity to work on a supervised longer paper with a professor who was kind enough to take me on. The J.D. programme is truly one where students, if they wish, can push themselves and grow in various areas; and the faculty is very happy to support such growth.”

Rennie Whang
J.D. Programme, Class of 2020
Justices' Law Clerk Supreme Court of Singapore

CURRICULUM

A J.D. student is required to complete a total of 25 course units (cus) of law courses. The cu of each core course will vary from 0.5 cu to 1.5 cus. A student will complete an average of 8 cus of core course in 1 year. No core course can be deferred in Year 1. Approval is required to defer any Year 2 core modules to Year 3. Students are only allowed to commence their 6 week legal internship, 20 hours of pro bono work and choose their electives after completing all Year 1 core courses.

The updated curriculum structure can be obtained at <https://law.smu.edu.sg/jd/detailed-curriculum>. The list of courses taught in the J.D. programme can be seen below:

LIST OF LAW CORE COURSES	
1. Commercial Conflict of Laws	9. Law of Evidence
2. Comparative Legal Systems	10. Law of Property
3. Constitutional & Administrative Law	11. Law of Torts
4. Contract Law 1	12. Legal Research & Writing
5. Contract Law 2	13. Legal System, Legal Method & Analysis
6. Criminal Law	14. Legal Theory & Philosophy
7. Law of Business Organisation	15. Capstone Project
8. Law of Equity & Trusts	

Students are allowed to take electives after the second term of Year 1. A total of 8.0 cus of law electives must be taken before graduation. A sample list of electives can be seen below:

LIST OF LAW ELECTIVES (ELECTIVES OFFERED MAY VARY FOR A GIVEN YEAR)	
1. An Introduction to International Banking and Financial Regulation	8. Competition Law
2. Banking Law	9. Comparative Law of Sales
3. Corporate Insolvency Law	10. Domestic and International Sales
4. Financial & Securities Regulation	11. Trade & Investment Law
5. Law of Corporate Finance	12. Foreign Direct Investment Law & Practice
6. Law of Mergers & Acquisitions	13. Joint Venture Law (Singapore – Indonesia)
7. Legal and Commercial Principles in Project Financing Transactions	14. Shipping & Admiralty Law
	15. WTO: Law and Policy
16. Appellate Practice in Civil Litigation	22. Advocacy
17. Contract Negotiation and Drafting	23. Complex International Litigation
18. Drafting of Commercial Agreements	24. International Commercial Arbitration
19. Drafting of Corporate Practice	25. International Arbitration Practice
20. Introduction to Civil Procedure	26. Negotiation & Mediation for Lawyers
21. Pre-trial Practice in Civil Litigation	
27. Corporate Crime	34. Economic Analysis of Law
28. Construction Law	35. International and Comparative Criminal Justice
29. International Construction Law	36. International Law and Global Politics
30. Law of Cybercrime and Digital Investigations	37. Jurisprudence: Modern & Critical Theories of Law
31. Principles of Singapore Income Tax	38. Law & Regulation
32. Principles of Taxation of International Business Transactions	39. Law and Policy of Ethnic Relations in Singapore
33. Insurance Law	40. Public International Law
41. Information Technology & the Law	48. Legal Issues in E-Commerce
42. Intellectual Assets and the Law in Asian Economies	49. Directed Research
43. Intellectual Property Law	50. Family Law
44. International Commercialisation of Intellectual Property	51. International Moots
45. International Patent Law and Policy	52. Law Study Mission
46. Law of Confidential Information, Trade Secrets and Privacy	53. Law and the Changing Media Environment
47. International Patent Law and Policy	

ADMISSION AND APPLICATION

ADMISSIONS CRITERIA

- Graduates in any discipline with at least a Cum Laude or Second Class Upper Honours degree; or
- Law graduates from a civil law country or a non-gazetted common law university with at least a Cum Laude or Second Class Upper Honours degree, or
- Graduates who will obtain their final transcript and graduation certification letter by the second week of June.

With effect from the 2018 admission intake, applicants who have obtained their Bachelor's degree via distance learning or part-time studies will be considered for admission if they have obtained at least a Second Class Upper Honours degree.

ENGLISH PROFICIENCY

Applicants must show proficiency in the English language. A TOEFL/IELTS test is required if the applicant's undergraduate degree was not conducted in English.

Applicants who are intending to take TOEFL or IELTS, please note the following minimum scores:

- TOEFL (Internet-based): 100
- IELTS: Overall band of 7.5

Scores that are more than 2 years old will not be accepted.

SMU ALUMNI COURSE EXEMPTION

SMU alumni who are admitted to the J.D. programme within three years of obtaining their SMU degree may be exempted for up to 5 course units from the 25 course units of the J.D. degree, if they have completed 5 LAW courses at SMU. Exemptions are subject to approval and not automatic.

The grade point obtained for the LAW courses exempted will be computed into the J.D. GPA. LGST and other universities' courses taken on exchange do not qualify for exemption.

PROGRAMME FEES

Please scan the QR code or visit our programme website for the prevailing tuition fee.



SMU J.D.-MBA ADVANCE PLACEMENT

The J.D./MBA will be considered as an advance placement/pathway should students wish to consider taking the other school's programme while studying for their J.D. or MBA. Admissions will be conducted separately by J.D. and MBA programmes. Students must meet admissions requirement of each school. Concessions MBA programme will give J.D. students opting to do MBA:

- 10% SMU Alumni discount on MBA tuition
- Internship exemption
- 3 MBA electives exemption and \$2K for each exempted elective

The advance placement for SMU MBA will begin with effect from Jan 2021.

Details on the SMU MBA can be found at <https://law.smu.edu.sg/curriculum/smu-jd-mba-advance-placement>

Please feel free to contact our SMU MBA colleagues at mba@smu.edu.sg



"I wanted to focus on international commercial arbitration after graduating from law school, and Singapore was the destination to fulfil my dream. Since Singapore is often chosen as a seat of arbitration, I would have greater exposure to arbitration work in Singapore as compared to other countries, and at the same time maintain my ties with Korean practitioners given the proximity of the nations. The main highlight of my J.D. education was the experiential approach that helps develop my confidence, analytical and presentation skills – essential attributes for thriving in the legal and corporate world. The international faculty – whose journal articles and books are often cited in Singapore Courts, also bring with them a wealth of practical knowledge into the classroom."

Mimi Ahn
J.D. Programme, Class of 2014
Associate Director, Focus Law Asia

YONG PUNG HOW SCHOOL OF LAW



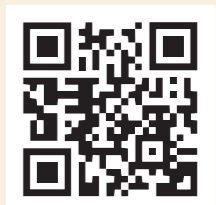
The SMU Yong Pung How School of Law began in 2000 as the Law Department within the Lee Kong Chian School of Business; headed then by Professor Andrew Phang (presently Judge of Appeal). In 2007, with Professor Michael Furmston at the helm, the department became a full-fledged law school and welcomed its first batch of students to its LL.B. and J.D. programmes. Professor Yeo Tiong Min, Singapore's first Honorary Senior Counsel, took over as dean in 2012. The current dean is Associate Professor Goh Yihan, who is the youngest dean to have been appointed at SMU.

SMU Yong Pung How School of Law has since expanded its academic offerings to include, among others, J.D. and LL.M. degrees as well as a suite of seminars for legal practitioners to obtain their CPD points under its SMU Law Academy. It houses leading research centres in the form of the Centre for Cross-Border Commercial Law in Asia (CEBCLA), the Applied Research Centre for Intellectual Assets and the Law in Asia (ARCIALA), and the Singapore International Dispute Resolution Academy (SIDRA). In 2017, it acquired its own premises along Armenian Street and now boasts various state-of-the-art facilities such as the Kwa Geok Choo Law Library and the David Marshall Moot Court.

Visit our Programme Website



Apply Now



SMU - IN THE HEART OF SINGAPORE, IN THE HEART OF ASIA

In the dynamic, cosmopolitan hub that is Singapore, you will find a vibrant city-state that pulses with the diversity of both East and West. Situated at the crossroads of the world, Singapore is home to multinational companies and thousands of small and medium-sized enterprises flourishing in a smart city renowned for its business excellence and connectivity. With its strong infrastructure, political stability and respect for intellectual property rights, this City in a Garden offers you unique opportunities to develop as a global citizen.

Tapping into the energy of the city is a university with a difference – the Singapore Management University. Our six schools: School of Accountancy, Lee Kong Chian School of Business, School of Computing and Information Systems, School of Economics, Yong Pung How School of Law, and School of Social Sciences form the country's only city campus, perfectly sited to foster strategic links with businesses and the community.

SMU generates leading-edge research with global impact and produces broad-based, creative and entrepreneurial leaders for a knowledge-based economy. Discover a multi-faceted lifestyle right here at SMU, in the heart of Singapore.

THE SMU MASTERS ADVANTAGE



GLOBAL RECOGNITION

SMU is globally recognised as one of the best specialised universities in Asia and the world. Its research rankings, programme rankings, accreditations and professional recognition are testaments to its achievements and standing.



INTERACTIVE PEDAGOGY

SMU's interactive, seminar-style pedagogy brings you stimulating, multidisciplinary learning under the mentorship of the thought leaders and subject experts who make up our faculty. You will hone your analytical skills, teamwork and communication skills.



INNOVATIVE CURRICULUM

Stay relevant with courses that combine cutting-edge research and up-to-date knowledge with best business practices. SMU's Postgraduate Professional Development Course and award-winning Asian case studies help you approach topics from different practical perspectives for greater insights.



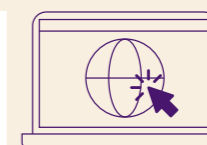
NETWORKING AND CAREER OPPORTUNITIES

SMU has a diverse student population from many different countries, bringing equally diverse personal and professional experience into your network. Take advantage of comprehensive guidance from our dedicated career services to aid your career transition or advancement.



CITY CAMPUS

SMU is nestled within the arts and heritage precinct, right next to the Central Business District, with unrivalled connectivity for public transport and multiple amenities around campus. Discover how life beyond the classroom is as enriching as within.



For a full listing of SMU Masters programmes, visit masters.smu.edu.sg/programmes



**Singapore Management University
Postgraduate Admissions**

Singapore Management University
Yong Pung How School of Law
55 Armenian Street
Singapore 179943

jd@smu.edu.sg

  [/SMUYPHSL](#)



 **SMUPGPP**

smu.edu.sg/jd