

# Accounting Masters

- ▶ Master of Professional Accounting (MPA)
- ▶ Master of Science in Accounting - Data & Analytics (MSA)



SINGAPORE MANAGEMENT  
UNIVERSITY

Discover a wealth of opportunities in an evolving sector

MASTERS



Anita Lee  
Class of 2019  
Associate Analyst, Mastercard

Ryan Guo  
Class of 2021  
Director and Program Lead,  
Revenue Operations  
Data Analytics, Visa

Master  
Your  
Future

SCHOOL OF  
ACCOUNTANCY

# WHY SMU ACCOUNTING MASTERS?



The **SMU School of Accountancy (SOA)** has built a reputation for its significant contributions to accounting research and high quality accounting education. With the onset of technological revolution in the accounting industry, SOA is prepared for the next phase of accounting education and research. Today we count world-class scholars and business leaders as part of our team. Our faculty members have consistently gained international recognition for research productivity.

We have a robust research environment with strong academic-driven research and practice research. At the same time, our faculty members consistently rank as the best teachers in the university. They also produce outstanding and internationally recognised pedagogical works. With this unique composition in our team, we have gained recognition for our contributions towards thought leadership, education and training in the accounting industry.

## OUR PROGRAMMES

### MASTER OF PROFESSIONAL ACCOUNTING

Cut an exciting new career path in the accountancy sector, whether in professional services or corporate accounting, across diverse industries. Not only does the SMU MPA offer an accelerated route towards qualification for CPA or CA status, it is also ideal for those needing accounting and essential data analytics knowledge in their expanded roles.

### MASTER OF SCIENCE IN ACCOUNTING (DATA & ANALYTICS)

Technological disruption in the accounting and finance sectors has created a high volume of data that requires critical thinking skills and analytical expertise. Learn to uncover patterns and insights for a valuable competitive advantage through the specialised data and analytics track. Be future ready with SMU MSA, the first-of-its-kind in Asia.

## 1 Elective Courses

Students who are interested in specialised accounting knowledge and new emerging issues can pursue a range of elective courses such as Blockchain and the New Economies, Machine Learning for Business, Data Governance and Quality and relevant courses with other SMU Masters programmes. This gives them the flexibility to enhance their knowledge in their preferred accounting domains and broaden their skill sets.

## 2 Internship and Dedicated Career Services

The Career Services team works with students to map out their career preparation and development paths. Through internships and a comprehensive range of training programmes, the career coaches are dedicated to empowering students with the necessary skills to realise their potential and goals.

## 3 CSR and Student Activities

The MPA and MSA Programme Office organises a myriad of enriching and experiential activities for students to pursue their passions, hone their networking skills and contribute to the community. Students will have opportunities to take part in industry talks, networking events, recreational and Corporate Social Responsibility (CSR) activities, where they are able to experience a meaningful and rewarding student life.

## 4 Global Immersion Programme

SMU has always been committed to nurturing global perspectives and cross-cultural understanding among our students. The Global Immersion Programme offers an exciting opportunity for students to study abroad and experience a different culture over the summer or winter break.

## SMU School of Accountancy



**1<sup>ST</sup>** IN THE WORLD IN CITATION RANKINGS  
BYU Accounting Research Rankings 2021



**1<sup>ST</sup>** IN THE WORLD IN ARCHIVAL RESEARCH (ALL TOPICS)  
BYU Accounting Research Rankings 2021



**1<sup>ST</sup>** IN THE WORLD IN ARCHIVAL RESEARCH (FINANCIAL ACCOUNTING)  
BYU Accounting Research Rankings 2021



**1<sup>ST</sup>** IN ASIA IN ALL AREAS AND ALL DISCIPLINES RESEARCH  
BYU Accounting Research Rankings 2021

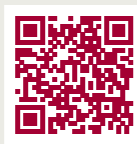
# PROGRAMME CURRICULUM

The MPA programme consists of 14 course units (CU), including 12CU discipline courses, 1CU internship or elective, and 1CU professional development course taught over 24 months on a part-time basis or over 12-18 months on a full-time basis, commencing in August of each calendar year.

PILLAR	COURSES
BUSINESS & DATA	Management & Strategy • Data Modelling & Visualisation • Accounting Information Systems
PROFESSIONAL ACCOUNTING CORE	Financial Accounting • Corporate Reporting & Financial Analysis • Advanced Financial Accounting • Management Accounting • Financial Management • Legal Environment of Business • Audit & Assurance • Taxation • Corporate Advisory
ELECTIVES	Programming for Business Analytics • Machine Learning for Business Blockchain and the New Economies • Data Management • Global Immersion Programme Relevant courses from other Postgraduate Programmes
INDUSTRY & PROFESSIONAL	Corporate Advisory • Internship • SMU Professional Development Courses
PROGRAMME ACTIVITIES	Industry Talks • Masterclass • Student Workshops • Activities • CSR Project

## PROGRAMME CALENDAR

	Aug - Dec	Jan - Apr	May - Aug	Sep - Nov		
FULL-TIME	4 Core Modules	4 Core Modules	4 Core Modules			
	1 Elective Course or Internship**					
	Professional Development Courses					
PART-TIME	Aug - Dec	Jan - Apr	May - Aug	Aug - Dec	Jan - Apr	May - Aug
	2 Core Modules	2 Core Modules	2 Core Modules	2 Core Modules	2 Core Modules	2 Core Modules
	1 Elective**					
	Professional Development Courses					
	Eligible students can take their internship at any point during the course of study, as long as the 10-week requirement is fulfilled.					
	**Students are required to take either one elective to fulfil the graduation requirement.					



Watch the video to learn more about the MPA Programme

## RANKING AND ACCREDITATIONS

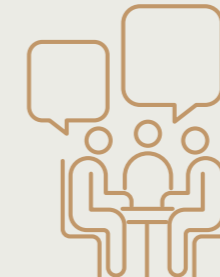


# A STEP UP IN YOUR CAREER



## INTERNATIONALLY RECOGNISED PROFESSIONAL DEGREE

With accreditations from 11 different professional, academic and regulatory bodies, including ISCA, CPA (AU), ACCA, ICAEW and more, the SMU MPA unlocks global career opportunities.



## WORLD-CLASS FACULTY

The programme is taught by some of the best academics and educators in their specialised fields. We also tap on leading industry practitioners for their specific expertise so that you gain industry insights.



## HIGH GRADUATE EMPLOYABILITY

Since our launch in 2006, our dedicated career services team has placed students in renowned companies for jobs and internships. It conducts workshops and seminars to help postgraduates sharpen their professional appeal to campus recruiters and facilitate internship placements.



## STAY AHEAD OF THE CURVE

Our curriculum provides graduates with strong business fundamentals, technical skills for various accounting functions and professional accounting services. Gain a competitive edge with courses such as Data Modelling & Visualisation, Programming with Data and Machine Learning for Business which will advance your skill sets in data technology.

# WHAT MAKES SMU MPA SPECIAL?



“The technical skills and soft skills that I learned from the MPA have prepared me well to be a strategic thinker and trusted business partner in my professional vocation. The freedom to articulate my views as well as the opportunity to brainstorm ideas with the lecturers who are industry practitioners and the experience of having classmates from diverse professional backgrounds have also shaped me to be a well-rounded and versatile professional.”

Fony Tasani, Class of 2018  
Finance Director & Head of Finance - Colliers International

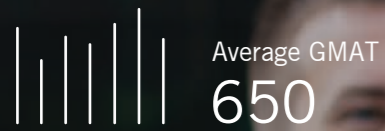


“The MPA provides valuable education and a fantastic platform for those looking to move up in their chosen fields, as well as those looking to change paths. Graduates especially benefit from the reach of the Programme's strong network of alumni, faculty and industry professionals.”

Arvind Balasubramanian, Class of 2018  
Senior Associate, KPMG Transfer Pricing

# CLASS PROFILE

Discover where your degree can take you, and the profile of great minds you could be networking with.



*Student profiles taken from Classes of 2018 to 2020*

# GRADUATES' EMPLOYABILITY



**~82%**  
Employed within  
**6 months**  
upon Graduation\*

*\*Graduates employability data is based on survey conducted for MPA students who filed for graduation in 2021.  
\*94% of graduates who filed for graduation in 2019 (pre-Covid) were employed within six months.*

# INDUSTRIES MPA GRADUATES WORK IN



Audit / Accounting  
**49%**



Financial Services  
**15%**



Technology  
**14%**



Real Estate  
**5%**



Education  
**4%**



Maritime  
**1%**



Media/Advertising/ Entertainment  
**1%**



Others  
**11%**

*Industry diversity data is collated from 2020 and 2021, and of graduating students.*

# PROGRAMME CURRICULUM

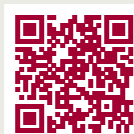
The MSA programme consists of 15-course units (CU), including 11CU discipline courses, 1CU capstone course, 2CU from internship and/or elective courses and 1CU professional development course taught over 24 months on a part-time basis or over 12-18 months on a full-time basis, commencing in August of each calendar year.

PILLAR	COURSES
ACCOUNTING BOOSTER	Financial Reporting in the IFRS World (Part I) • Financial Reporting in the IFRS World (Part II) • Managing for Value Creation
DATA ANALYTICS	Applied Statistics for Data Analysis • Programming with Data • Data Management Forecasting and Forensic Analytics • Analytics for Value Investing • Analytics for Financial Instruments • Visual Analytics for Accounting • Accounting Information Systems
ELECTIVES ( UP TO 2 COURSES )	Blockchain and the New Economies • Machine Learning for Business Data Governance and Quality • Global Immersion Programme Relevant courses from other Postgraduate Programmes
INDUSTRY & PROFESSIONAL	Accounting Analytics Capstone (SMU-X) • Internship SMU Professional Development Courses
PROGRAMME ACTIVITIES	Industry Talks • Masterclass • Student Workshops • Activities • CSR Project

## PROGRAMME CALENDAR

	Aug - Nov	Nov - Dec	Jan - Apr	Apr - Aug	Jul - Nov			
FULL-TIME	5 Core Modules	1 Elective	4 Core Modules	2 Core Modules + SMU-X	1 Internship Elective			
			1 Elective**	1 Elective**				
	Professional Development Courses							
	Aug - Nov	Nov - Dec	Jan - Apr	Apr - Jul	Aug - Nov	Nov - Dec	Jan - Apr	Apr - Aug
PART-TIME	3 Core Modules	1 Elective	2 Core Modules	1 Core Module	2 Core Modules	1 Elective	2 Core Modules	1 Core Module + SMU-X
			1 Elective**	1 Elective**			1 Elective**	1 Elective**
	Professional Development Courses							
Eligible students can take their internship at any point during the course of study, as long as the 10-week requirement is fulfilled.								

\*\*Students are required to take either two electives or one elective and one internship to fulfil the graduation requirement.



Watch the video to learn more about the MSA Programme

# TRANSFORMING BUSINESS PROFESSIONALS IN THE DATA AGE



## BE FUTURE READY

The change is revolutionary, and accounting and finance professionals are expected to use this big data to facilitate daily business decisions. In this programme, you will learn how to analyse large amounts of data and uncover patterns and insights that will give your firm a valuable competitive advantage.



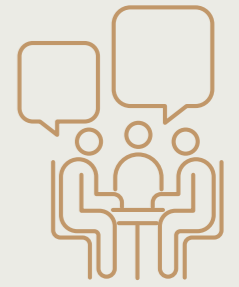
## FIRST-OF-ITS-KIND IN ASIA

The MSA programme is the first specialised Master's degree in accounting data and analytics in Asia. Unlike any other postgraduate analytics programme, the MSA's data and analytics track goes deep into the application of data technology in the accounting domain.



## RAISING THE BAR

The accounting services sector echoes the same needs for accounting professionals to embrace and incorporate data technology to enhance their work. In fact, employers say they give hiring priority to accounting graduates with knowledge of data and analytics. These graduates command a premium salary as compared to their counterparts.



## EXPERIENCE THE SMU-X DIFFERENCE

With the introduction of SMU-X, teaching has been given a new spin, combining academic and experiential learning, leading to a 3-way interaction involving professors, students and industry professionals.

## WHAT MAKES SMU MSA SPECIAL?



**“Having been a technically-savvy finance professional for most of my career, there is an increasing focus on the application of technology to finance processes. Simply relying on our IT colleagues to fill us in on technical developments is a thing of the past. With the MSA being run by the School of Accountancy and a pedagogical approach which focuses not on creating data scientists but more on data-adept finance professionals, this was a course tailor-made for me.”**

Ryan Guo Yusheng, Class of 2021  
Director and Program Lead, Revenue Operations Data Analytics, Visa

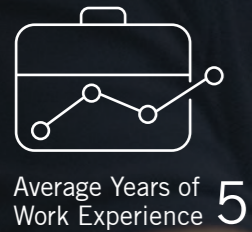
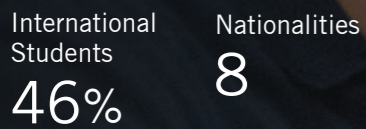


**“In a disrupted and uncertain world, change is the only constant. Now, when information is ubiquitous, clarity is priceless, and the need to separate facts from assumptions and extracting insights from facts has never been more important, both in delivering customer experiences and in business decision-making. Data and analytics provides the solution to this challenge. Because of this, more than ever, we are in need of analytics-intelligent executives.”**

Mr Max Loh  
Managing Partner, Singapore & Brunei, Ernst & Young LLP Industry Partner

# CLASS PROFILE

Discover where your degree can take you, and the profile of great minds you could be networking with.



*Student profiles taken from Classes of 2018 to 2020*

## GRADUATES' EMPLOYABILITY



**~93%**  
Employed within  
**6 months**  
upon Graduation\*

*\*Graduates employability data is based on survey conducted for MSA students who filed for graduation in 2021.*

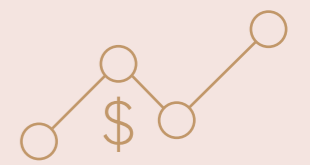
## INDUSTRIES MSA GRADUATES WORK IN



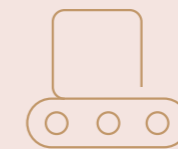
Technology  
**30%**



Audit / Accounting  
**26%**



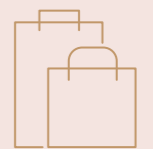
Financial Services  
**18%**



Manufacturing  
**8%**



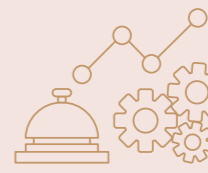
Real Estate  
**4%**



Retail/ Wholesale  
**4%**



Education  
**4%**



Others  
**6%**

*Industry diversity data is collated from 2020 and 2021, and of graduating students.*

# ADMISSION AND APPLICATION



## MODE OF STUDY

**Master of Professional Accounting** : 18 months full-time\* or 24 months part-time  
**Master of Science in Accounting** : 18 months full-time\* or 24 months part-time

*\*Students can complete the programme within 12 months on a fast track basis*

Full-time study is open to all. Part-time study is available only to Singapore Citizens, Permanent Residents and International students who hold a valid employment pass or dependent pass.

## ADMISSION REQUIREMENTS

- Good undergraduate degree
- Good score in GMAT/GRE or SMU Admissions Test\*
- Valid TOEFL/IELTS score for applicants whose Bachelor's/Master's/PhD Degree was not taught in English
- MPA applicants must have sufficient background in Mathematics/Calculus
- MSA applicants must have sufficient background in Statistics/Accounting/Finance/Business
- 2 referees
- Admission interview for shortlisted applicants

## SCHOLARSHIPS

Scholarships are awarded to outstanding candidates who have demonstrated academic excellence and strong leadership qualities. The scholarships are bond-free. Terms and conditions apply.



Schedule an appointment  
with an Admissions Advisor.

# PROGRAMME FEES

## MASTER OF PROFESSIONAL ACCOUNTING (MPA)

<b>Application Fee</b>	S\$100 inclusive of GST (non-refundable)
<b>Deposit and Registration Fee</b>	S\$400 (Registration) inclusive of GST + S\$5,000 (Deposit) – For Singaporeans & PR S\$500 (Registration) inclusive of GST + S\$5,000 (Deposit) – For International Students Deposit and Registration Fees are non-refundable and payable upon acceptance into the programme. The deposit will contribute to the first billing of the tuition fee.
<b>Tuition Fee</b>	Please refer to the programme website for the prevailing tuition fees. <a href="http://www.smu.edu.sg/mpa">www.smu.edu.sg/mpa</a>

\*Goods and Services Tax (GST) is a tax collected on behalf of the Singapore Government and will be charged at the prevailing rate.

## MASTER OF SCIENCE IN ACCOUNTING (MSA)

<b>Application Fee</b>	S\$100 inclusive of GST (non-refundable)
<b>Deposit and Registration Fee</b>	S\$400 (Registration) inclusive of GST + S\$5,000 (Deposit) – For Singaporeans & PR S\$500 (Registration) inclusive of GST + S\$5,000 (Deposit) – For International Students Deposit and Registration Fees are non-refundable and payable upon acceptance into the programme. The deposit will contribute to the first billing of the tuition fee.
<b>Tuition Fee</b>	Please refer to the programme website for the prevailing tuition fees. <a href="http://www.smu.edu.sg/msa">www.smu.edu.sg/msa</a>

\*Goods and Services Tax (GST) is a tax collected on behalf of the Singapore Government and will be charged at the prevailing rate.

Apply Now (MPA)



Apply Now (MSA)



Contact us to schedule an appointment for programme consultation: MPA: [mpa@smu.edu.sg](mailto:mpa@smu.edu.sg) | MSA: [msa@smu.edu.sg](mailto:msa@smu.edu.sg)

# SMU - IN THE HEART OF SINGAPORE, IN THE HEART OF ASIA

In the dynamic, cosmopolitan hub that is Singapore, you will find a vibrant city-state that pulses with the diversity of both East and West. Situated at the crossroads of the world, Singapore is home to multinational companies and thousands of small and medium-sized enterprises flourishing in a smart city renowned for its business excellence and connectivity. With its strong infrastructure, political stability and respect for intellectual property rights, this City in a Garden offers you unique opportunities to develop as a global citizen.

Tapping into the energy of the city is a university with a difference – the Singapore Management University. Our six schools: School of Accountancy, Lee Kong Chian School of Business, School of Computing and Information Systems, School of Economics, Yong Pung How School of Law, and School of Social Sciences form the country's only city campus, perfectly sited to foster strategic links with businesses and the community.

SMU generates leading-edge research with global impact and produces broad-based, creative and entrepreneurial leaders for a knowledge-based economy. Discover a multi-faceted lifestyle right here at SMU, in the heart of Singapore.

## THE SMU MASTERS ADVANTAGE



### GLOBAL RECOGNITION

SMU is globally recognised as one of the best specialised universities in Asia and the world. Its research rankings, programme rankings, accreditations and professional recognition are testaments to its achievements and standing.



### INTERACTIVE PEDAGOGY

SMU's interactive, seminar-style pedagogy brings you stimulating, multidisciplinary learning under the mentorship of the thought leaders and subject experts who make up our faculty. You will hone your analytical skills, teamwork and communication skills.



### INNOVATIVE CURRICULUM

Stay relevant with courses that combine cutting-edge research and up-to-date knowledge with best business practices. SMU's Postgraduate Professional Development Course and award-winning Asian case studies help you approach topics from different practical perspectives for greater insights.



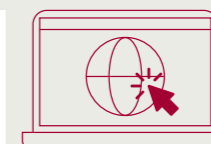
### NETWORKING AND CAREER OPPORTUNITIES

SMU has a diverse student population from many different countries, bringing equally diverse personal and professional experience into your network. Take advantage of comprehensive guidance from our dedicated career services to aid your career transition or advancement.



### CITY CAMPUS

SMU is nestled within the arts and heritage precinct, right next to the Central Business District, with unrivalled connectivity for public transport and multiple amenities around campus. Discover how life beyond the classroom is as enriching as within.



For a full listing of SMU Masters programmes, visit [masters.smu.edu.sg/programmes](https://masters.smu.edu.sg/programmes)





**Singapore Management University  
Postgraduate Admissions**

Singapore Management University  
School of Accountancy  
60 Stamford Road  
Singapore 178900

(65) 6828 0606  
mpa@smu.edu.sg

(65) 6808 5450  
msa@smu.edu.sg

 SMU ACCOUNTING MASTERS

 SMU ACCOUNTING MASTERS

 SMUACCT

[smu.edu.sg/mpa](http://smu.edu.sg/mpa)  
[smu.edu.sg/msa](http://smu.edu.sg/msa)